



HEIDENHAIN



Preliminary
Product Information

ERA 4280

ERA 4480

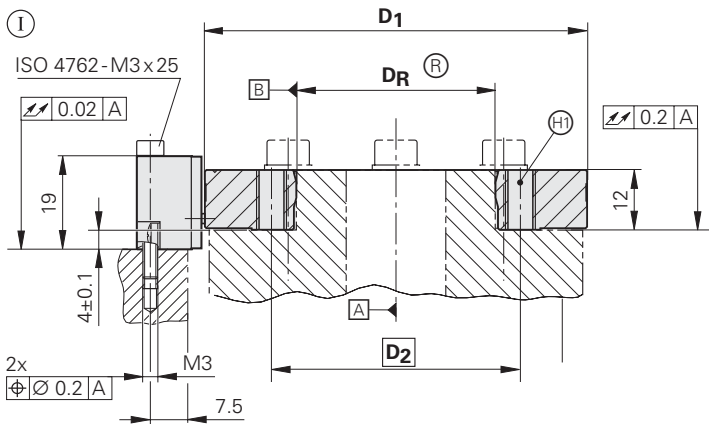
ERA 4880

Incremental
Modular Angle Encoders

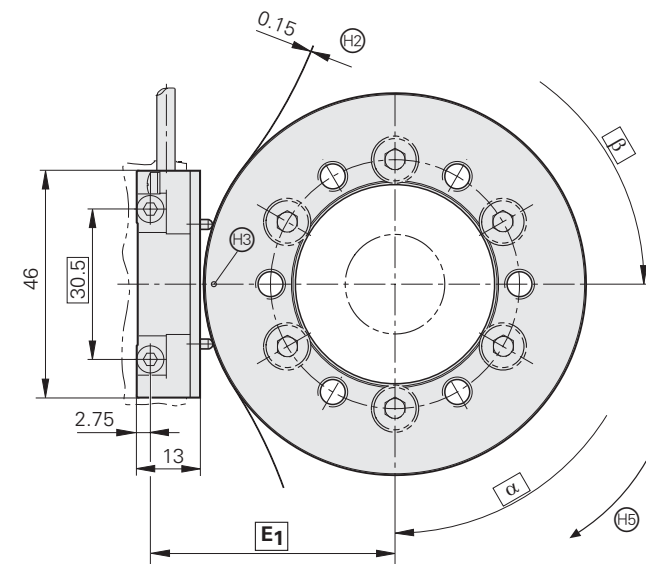
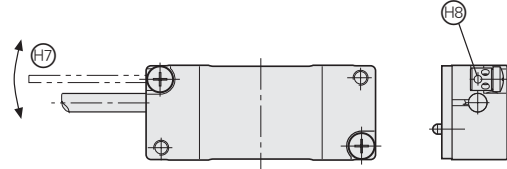
September 2005

ERA 4280, ERA 4480, ERA 4880

- Grating on steel drum
- Requires less space thanks to smaller scanning head



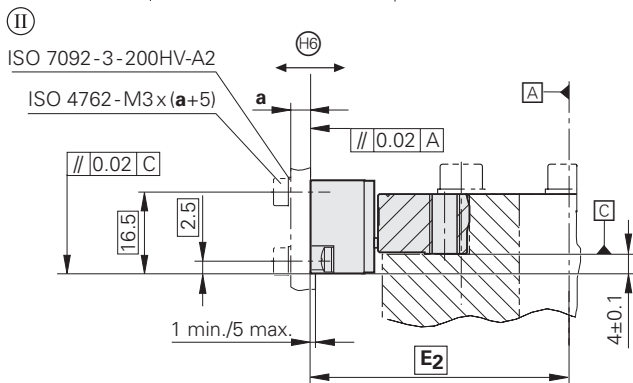
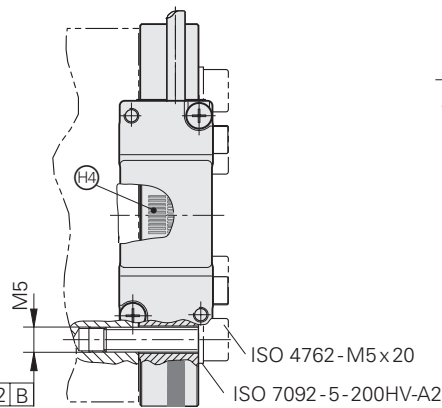
Fine adjustment of the ERA 4280 scanning head



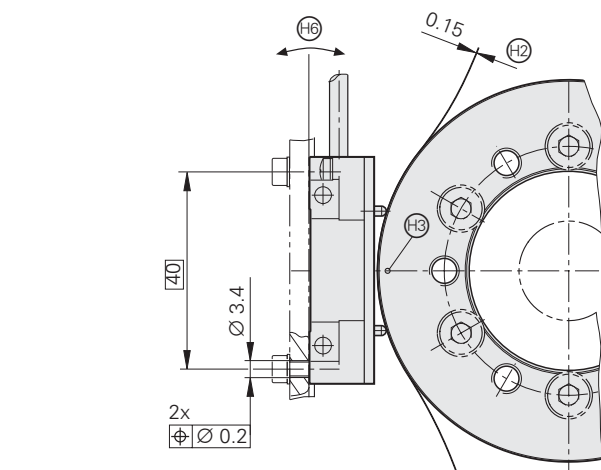
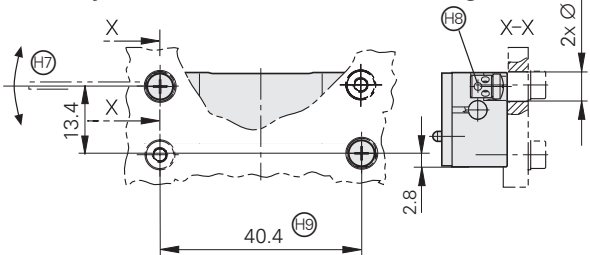
Dimensions in mm



Tolerancing ISO 8015
ISO 2768 - m H
< 6 mm: ±0.2 mm



Fine adjustment of the ERA 4280 scanning head



- Ⓚ, Ⓛ = Mounting options
- Ⓜ = Ball bearing
- Ⓝ = Mating shaft
- Ⓞ = Back-off thread M6
- Ⓟ = Mounting clearance (spacer foil)
- Ⓠ = Marker for reference mark
- Ⓡ = Reference mark
- Ⓢ = Positive direction of rotation
- Ⓣ = Ensure adjustability of mounting surface for scanning head
- Ⓤ = ERA 4280 scanning head with eccentric nut for fine adjustment (grating period = 20 μm)
- Ⓥ = Eccentric nut
- Ⓦ = Mounting holes (only for ERA 4280 scanning head)

Specifications	ERA 4280 ¹⁾ ERA 4480 ¹⁾ ERA 4880 ¹⁾							
Incremental signals	$\sim 1 V_{PP}$							
Scale reference marks*	ERA 4xxx: One ERA 4xxx C: Distance-coded							
Cutoff frequency -3dB	≥ 350 kHz							
Power supply	5 V \pm 10%/max. 100 mA (without load)							
Electrical connection	Cable, 1 m, with M23 coupling (12-pin)							
Max. cable length	150 m (with HEIDENHAIN cable)							
Drum inside diameter*	40 mm	70 mm	80 mm	120 mm	150 mm	180 mm	270 mm	
Drum outside diameter*	76.75 mm	104.63 mm	127.64 mm	178.55 mm	208.89 mm	254.93 mm	331.31 mm	
Line count ERA 4280 (20 μ m grating period) ERA 4480 (40 μ m grating period) ERA 4480 (80 μ m grating period)	12 000 6 000 3 000	16 384 8 192 4 096	20 000 10 000 5 000	28 000 14 000 7 000	32 768 16 384 8 192	40 000 20 000 10 000	52 000 26 000 13 000	
Mech. permissible speed	10 000 rpm	8 500 rpm	6 250 rpm	4 500 rpm	4 250 rpm	3 250 rpm	2 500 rpm	
Moment of inertia of rotor	$0.27 \cdot 10^{-3}$ kgm ²	$0.81 \cdot 10^{-3}$ kgm ²	$1.9 \cdot 10^{-3}$ kgm ²	$7.1 \cdot 10^{-3}$ kgm ²	$12 \cdot 10^{-3}$ kgm ²	$28 \cdot 10^{-3}$ kgm ²	$59 \cdot 10^{-3}$ kgm ²	
Permissible axial movement	± 0.5 mm							
Vibration 55 to 2000 Hz Shock 6 ms	≤ 100 m/s ² (IEC 60 068-2-6) ≤ 500 m/s ² (IEC 60 068-2-27)							
Max. operating temperature	80 °C							
Min. operating temperature	-10 °C							
Protection IEC 60 529	IP 00							
Weight (approx.)	Scale drum	0.28 kg	0.41 kg	0.68 kg	1.2 kg	1.5 kg	2.3 kg	2.6 kg
	Scanning head without cable	0.020 kg						

* Please indicate when ordering

¹⁾ Availability scheduled for first half of 2006

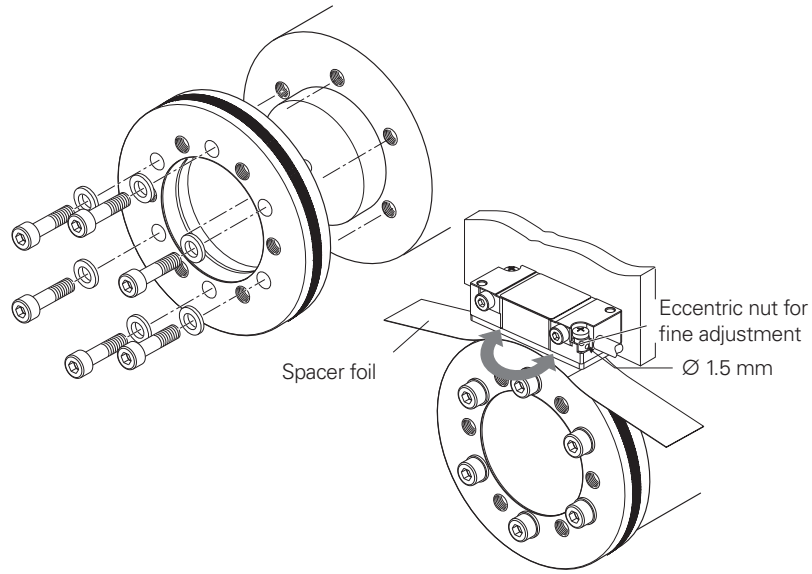
D ₁	D ₂	D _R	E ₁	E ₂	α	β
∅ 76.75	∅ 50	∅ 40+0.005	49.34	52.08	6 x 60° = 360°	6 x 60° = 360°
∅ 104.63	∅ 85	∅ 70+0.005	63.28	66.02		
∅ 127.64	∅ 95	∅ 80+0.005	74.78	77.52		
∅ 178.55	∅ 140	∅ 120+0.008	100.24	102.98		
∅ 208.89	∅ 165	∅ 150+0.008	115.41	118.15		
∅ 254.93	∅ 200	∅ 180+0.008	138.43	141.17		
∅ 331.31	∅ 290	∅ 270+0.008	176.62	179.36	12 x 30° = 360°	12 x 60° = 360°

Assembly

The ERA 4xxx modular angle encoder is supplied as two components: the scale drum and the scanning head.

The circumferential scale drum is slid onto the drive shaft and fastened with screws. The scale drum is centered via the centering collar on its inner circumference. HEIDENHAIN recommends using a transition fit for mounting the scale drum. For mounting, the scale drum may be slowly warmed on a heating plate over a period of approx. 10 minutes to a maximum temperature of 100 °C.

To mount the scanning head, the spacer foil is placed on the radial surface of the scale drum. Then the head is pressed against the foil, fastened, and the foil is removed. The ERA 4280 also features an eccentric nut for fine adjustment of the scanning field.



Electrical Connection

Pin layout

12-pin M23 coupling													
	Power supply				Incremental signals						Other signals		
	12	2	10	11	5	6	8	1	3	4	9	7	-
	Up	Sensor Up	0V	Sensor 0V	A+	A-	B+	B-	R+	R-	Vacant	Vacant	Vacant
	Brown/ Green	Blue	White/ Green	White	Brown	Green	Gray	Pink	Red	Black	-	Violet	Yellow

Shield on housing; **Up** = power supply;

Sensor: The power supply voltage can be sensed over bridges in the connector plug

Encoder cable

PUR connecting cable Ø 8 mm [4(2 x 0.14 mm ²) + (4 x 0.5 mm ²)]		
<p>Complete with M23 connector (female) and M23 coupling (male) Id. Nr. 298401-xx</p>	<p>Complete with M23 connector (female) and D-sub connector (female) for IK 220 Id. Nr. 310199-xx</p>	<p>With one M23 connector (female) Id. Nr. 309777-xx</p>

HEIDENHAIN

DR. JOHANNES HEIDENHAIN GmbH

Dr.-Johannes-Heidenhain-Straße 5

83301 Traunreut, Germany

+49 (8669) 31-0

+49 (8669) 5061

e-mail: info@heidenhain.de

www.heidenhain.de

For more information

- Angle Encoders brochure